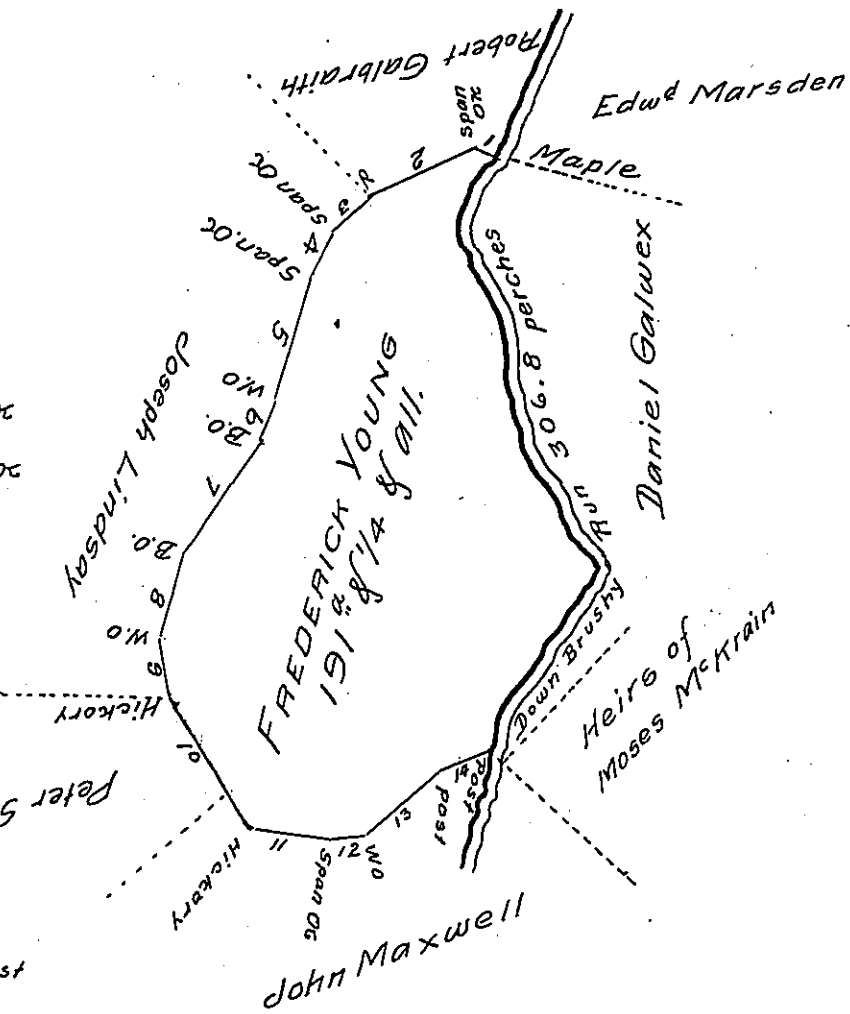


Beginning at a Maple a
Corner of Daniel Galwex &
thence as follows

- N^o 1 N 83 1/2 W 13.3 ps. Span Oc
 - N^o 2 S 63 1/2 W 53.5 ps. Post
 - N^o 3 S 54 3/4 W 19.6 ps. Span Oc
 - N^o 4 S 29 1/4 W 20.4 ps. Span Oc
 - N^o 5 S 17 1/2 W 62 ps. W.O
 - N^o 6 S 19 3/4 W 17.2 ps. B.O
 - N^o 7 S 36 3/4 W 56 ps. B.O
 - N^o 8 S 15 W 36.2 ps. W.O
 - N^o 9 S 8 E 23.2 ps. HickY
 - N^o 10 S 32 1/4 E 67.3 ps. HickY
 - N^o 11 S 82 1/4 E 37.1 ps. HickY
 - N^o 12 N 87 E 14.2 ps. W.O.
 - N^o 13 N 50 1/2 E 46 ps. Post
 - N^o 14 N 83 E 26 ps. to a post
- thence by Land of Daniel Galwex
the several Courses of Brushy Run
306.8 p to the place of Beginning



Situated in Mountpleasant Township York County & surveyed the
29th day of April 1785 in pursuance of a Warrant dated the
12th day of March 1785

By Moses McGlean D.S.

To John Lukens Esq

Surveyor General.

IN TESTIMONY that the above is a copy of the original remaining on file in
the Department of Internal Affairs of Pennsylvania, made
conformably to an Act of Assembly approved the 16th day of
February, 1833, I have hereunto set my Hand and caused
the Seal of said Department to be affixed at Harrisburg,
this sixth day of August 1907

Henry Howell
Secretary of Internal Affairs.